

# MCH5

## CNG - VRA


- CHARGING RATE :  
85 L/min - 5 m<sup>3</sup>/h - 3 CFM
- FILLING TIME TANK 80 Liters - 0/200 Bar : 3 h
- WORKING PRESSURE : 200 Bar - 2900 Psi
- DRIVEN BY : Three-phase or single-phase electric motor (Atex certified)
- POWER : Three-phase 3 Kw (400/690 V - 50 Hz)  
Single-phase 3 Kw (230 V - 50/60 Hz) 16,7 Ampere
- DIMENSIONS : height 105 cm / 41.3"     "  
width 70 cm / 27.5" - depth 67 cm / 26.3
- DRY WEIGHT : 160 Kg / 352 lbs
- NOISE : 65 dB (at 1 m distance)
- N° STAGES AND CYLINDERS : 3
- LUBRICANT : Coltri Oil CE 750
- FRAME : Powder coated steel
- OIL/MOISTURE SEPARATORS: 1
- FILTRATION : 1 Maxifilter with molecular sieve and active carbon
- SAFETY PRESSURE SWITCH : 1 last stage
- INTERSTAGE COOLERS AND AFTER COOLERS :  
Stainless steel
- MIN/MAX SUCTION PRESSURE : 17 mbar - 200 mbar
- DELIVERY TEMPERATURE : Ambient temp. + 5° C
- FORCED AIR COOLED
- COMPRESSOR RPM : 1240



MADE IN ITALY

**COLTRI**  
COMPRESSORS

[www.aerotecnicacoltri.it](http://www.aerotecnicacoltri.it)

CE  II 3G EEx T4

# MCH5

CNG - VRA

3rd STAGE  
HIGH PRESSURE CYLINDER

RECHARGE  
PRESSURE GAUGE

SAFETY VALVE

COMPRESSOR OIL LEVEL

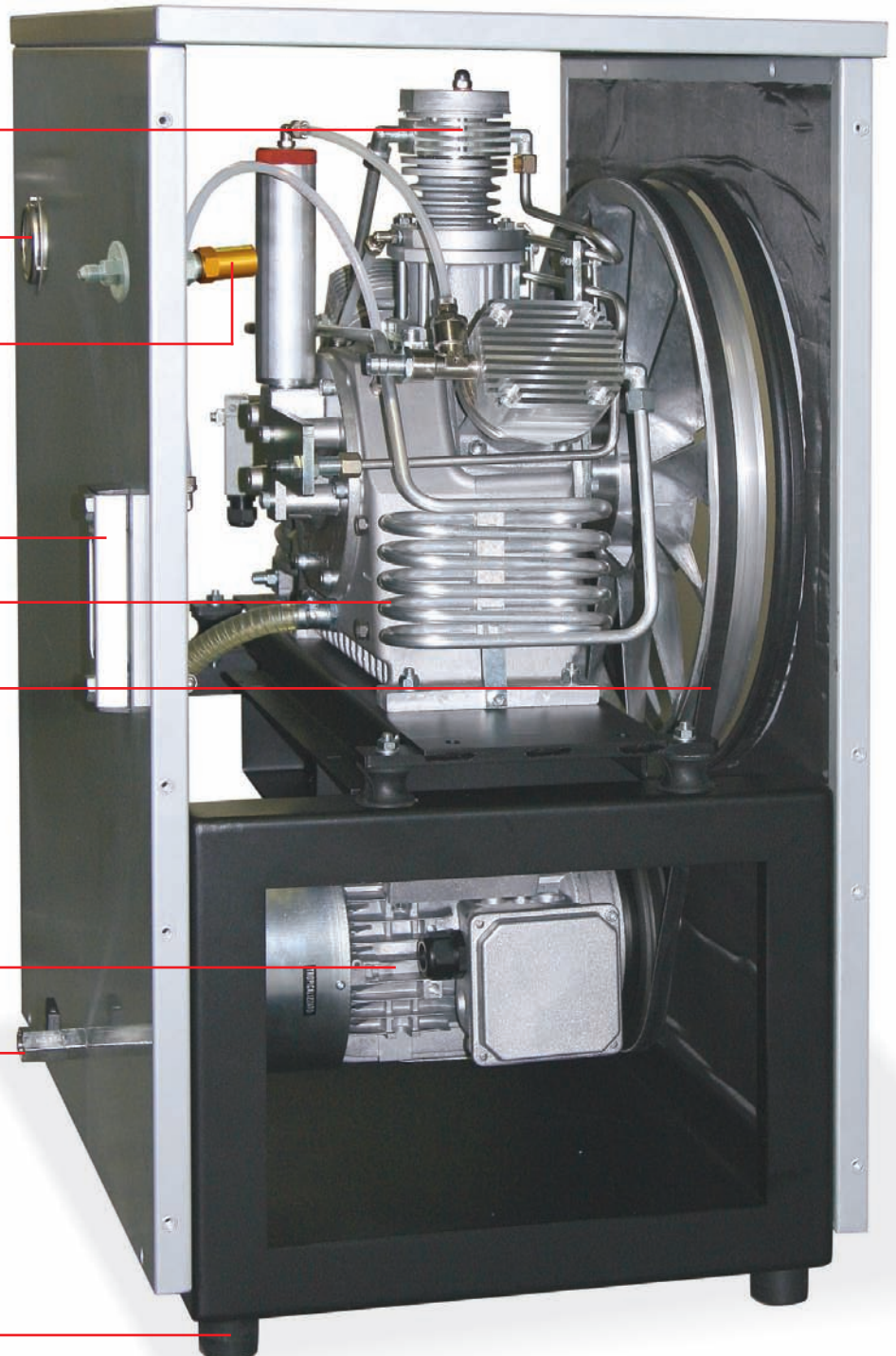
ALUMINUM  
INTERCOOLERS

ANTISTATIC BELT DRIVE

ATEX MOTOR  
3 Kw SINGLE-PHASE

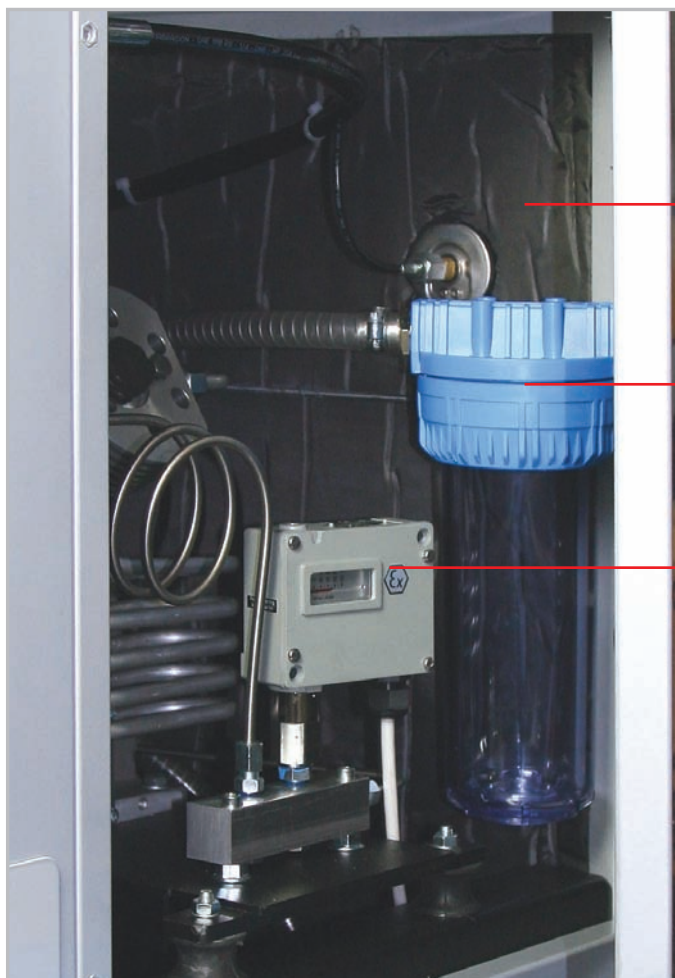
OIL DRAIN

RUBBER FEET



# MCH5

CNG - VRA



□ SOUNDPROOF ISOLATION  
(FLAME PROOF)

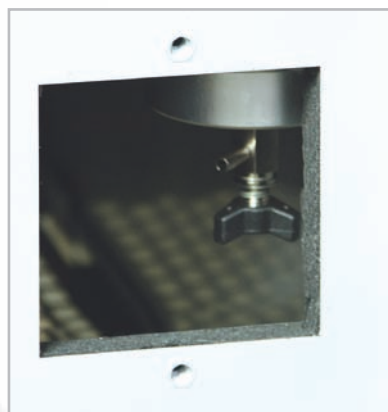
□ INTAKE FILTER

□ PRESSURE SWITCH  
FOR AUTOSTOP



□ MAXIFILTER  
WITH MOLECULAR SIEVE  
AND ACTIVATED CARBON

□ COOLING FAN  
WITH ANTISTATIC BLADES



CONDENSATE DRAIN

# MCH5

CNG - VRA



height 105 cm / 41.3"

depth 67 cm / 26.3"

width 70 cm / 27.5"

**AEROTECNICA COLTRI® S.p.A.**

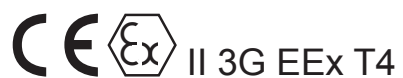
via Colli Storici 177

25010 San Martino della Battaglia - Brescia - ITALY

Tel: +39.030.99.103.01 +39.030.99.102.97

Fax: +39.030.99.10.283

www.aerotecnicacoltri.it coltrisub@coltrisub.it



www.aerotecnicacoltri.it